



healthy innovation



# Century C1000-C2000 and C3000 Series Holter Systems

Advanced Technology in Rhythm Analysis

biomedical systems

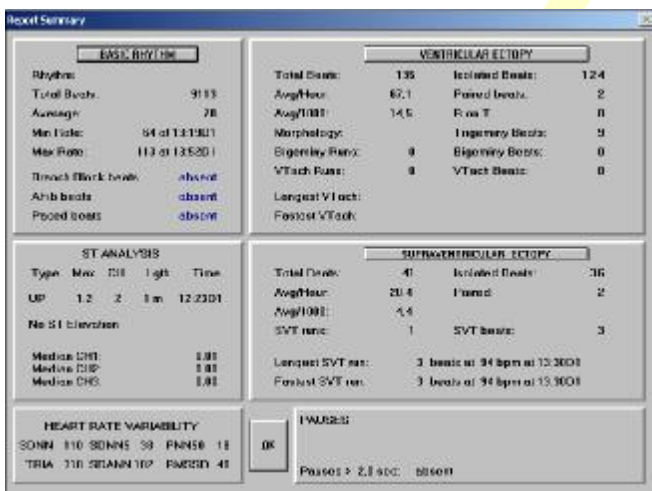
Biomedical Systems developed The Century Holter scanner after 15 years experience as a leading Holter service provider nationwide.

Drawing from scanning technicians, collaborative research efforts with major universities and a team of design engineers, the Century line was created and has been sold worldwide since 1989. Biomedical Systems is now a leading provider of ECG, Holter, Respiratory & Ambulatory Blood Pressure services for the Pharmaceutical industry where high quality controls are the standard.

The Century line of Holter scanners offers the Century Series 1000, 2000 & 3000, comprehensive, interactive Holter systems designed to accommodate the most discerning technicians. A Windows based platform utilizing mouse and/or keyboard control, the Century Series incorporates all of the traditional scanning techniques including *Superimposition* and *Page Mode Scanning* as well as innovative edit tools designed to decrease scanning time and increase accuracy.

What makes *the Century Series* right for you is the flexibility to choose from several different scanning modes.

- Technicians of different background can all be accommodated on the same Century Series system.
- Specialized areas of interest in Holter data, like ST, QT, HRV and RTV, including Poincaré graphs, are all part of the Century Series Package.
- Easy editing tools allow for fast, accurate corrections with normal and artifact tapes.
- Special network features and export modules allow your Holter data to be stored and reviewed from other applications, such as ECG management systems and hospital archives.
- The flexible and open architecture of the Century Series permits the use of other applications on the same PC used by scanner, freeing up valuable workspace in your department or office.
- Whether it's a word processor or PC based applications, you can run them on the same computer.



## All the features you want on one system

- Superimposition Scanning
- Page Mode Scanning
- Automated Scan Procedures
- Heart Rate Variability Analysis
- Automated HRV/RTV Module
- Research
- P-Wave Analysis
- Pacemaker Analysis
- Dual Page Preview
- Cassette & Flashcard Technology

### Optional:

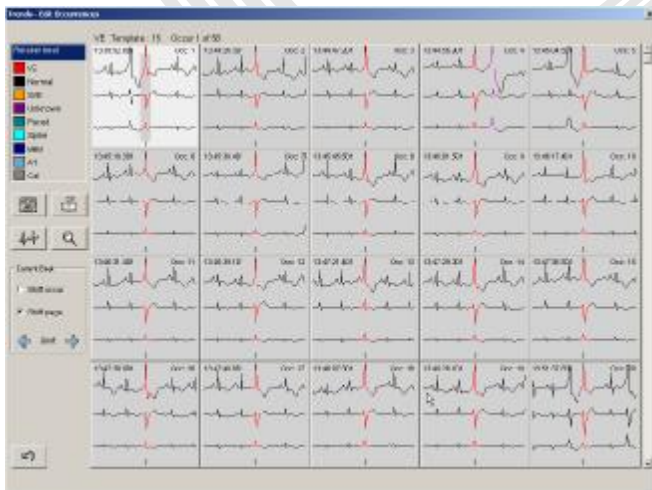
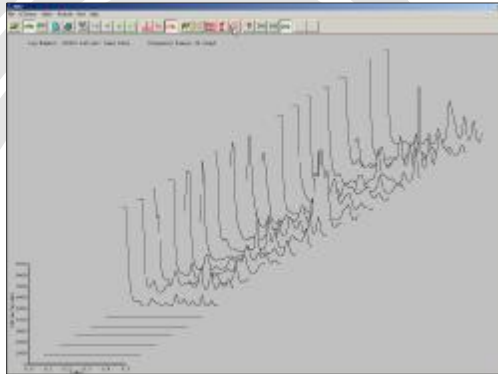
- Standard & Enhanced ST Analysis
- QT Analysis
- Network Interface Features
- Data Export Module (ASCII&TIF Formats)

Prospective SUPERIMPOSE, interactive system with full automatic or manual scanning mode

# Century C1000-C2000 and C3000 Series



Elite-3 Recorder



## Technical Specifications

### Scanning devices

The C2000 accommodates both 2/3 Channels cassette recorders (analyze tapes of all recorders, with time track, adjustable frequency & speed) and the newer BMS digital recorders, DL700, Aspect, DXP1000, DR516, Dual HLP and ELITE-3.

### Scanning mode

Customized scanning profile  
 Neural network algorithm recognition & Turbo mode Interactive Mode- defaults setting, ST settings on 3 channels  
 Multiple Morphology classifications  
 Artifact re-labeling.  
 Pacemaker and Spike & A. Fib classification

### Automatic mode

Automated template editing  
 Manual editing- Up to 200 BINS with SVE BIN &Artifact BIN beat by beat editable  
 Superimpose, zoom mode & automatic matching

### Validation

Automated or manual editable  
 Saving strips, measurements, re-labeling, run length.  
 Documentation on the following categories Min & Max. Heart rate, SVE, SVE pairs and SVT, VE, VE pairs, VTACH, Bigeminy and Trigeminy  
 All ST changes, PR / PQ analyzing module.  
 Pacemaker analyze: Failure to sense , Failure to capture

### Strips

Automatic documentation on Diary and Pre selected strips during analyze  
 Ability to Manually save Strips from Trends & Validation  
 Save strips from time in 3 different formats

### Trends

#### full trends screen

Multiple Zoom modes , saving strops  
 Automated HR, PR and QT measurements.  
 Automated search, Re-labeling and classifications.  
 Block selection for pacemaker, A FIB...  
 Retrospective superimposition

### HRVI

#### Time Domain with Poincaré plots

RR distribution bins with corresponding strip  
**Automated HRV/RTV and frequency domain report**

### REPORT

#### Standard or customized report options.

Tabular or paragraph Report format  
 Ectopic tables, Pacemaker and Bradycardia table  
 Histogram, HR and ST Trends, HRV,  
 Diagnostic and diary strips.  
 Full Disclosure. 30 minutes or 60 minutes / page  
 Template report.  
 HRVI report, RR distribution, RR histograms  
 3D frequency domain printouts

**TEPA Medical and Electronic Products Industry and Trade Incorporated**  
 Address: Gersan Sanayi Sitesi 656. Sokak, No: 45, Ergazi, 06370 Ankara, TURKEY  
 Phone: 0090.312. 257 04 77 • Fax: 0090.312. 257 04 78 • [www.tepa.com.tr](http://www.tepa.com.tr)

Tepa is ISO9001-ISO13488 certified company & has CE Certification for its products.

Copyright © October-2004 All rights reserved. TEPA Inc. reserves the right to change specifications at any time without notice.  
 Tepa® and Kardiosis® are registered trademarks of Tepa Inc., "Windows" is registered trademark of Microsoft Corporation.

